



Global Technology Outlook 2015 – Data Transforming Industries

Henrique Säuberli

Executive Briefing Consultant FSS

IBM Research THINKLab Zurich

The World is Our Lab

World's largest information technology research organization

More than 3,000 scientists and engineers

IBM invested \$5.2B on R&D in 2015



IBM Research - Zurich

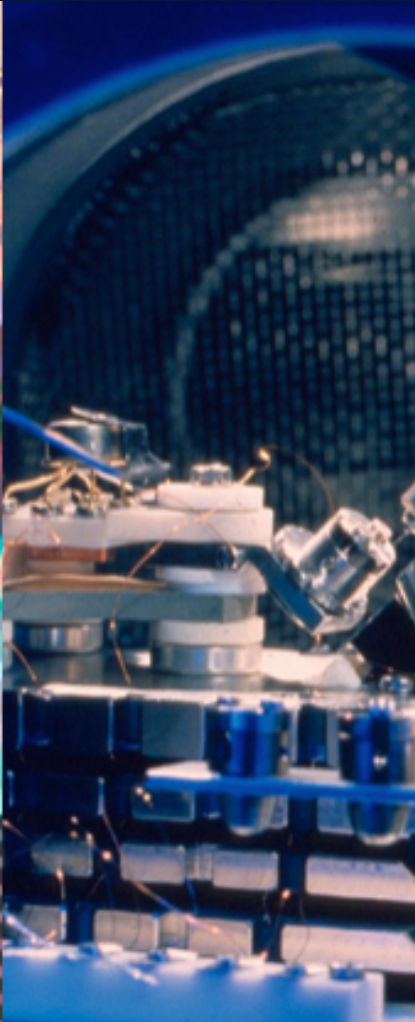
- Established in 1956
- 45+ different nationalities
- Open Collaboration:
 - Horizon2020: 30 funded projects and +200 partners
- Two Nobel Prizes (1986 and 1987)
- Binnig and Rohrer Nanotechnology Centre opened in 2011 (Public Private Partnership with ETH Zürich and EMPA)
- 9 European Research Council Grants



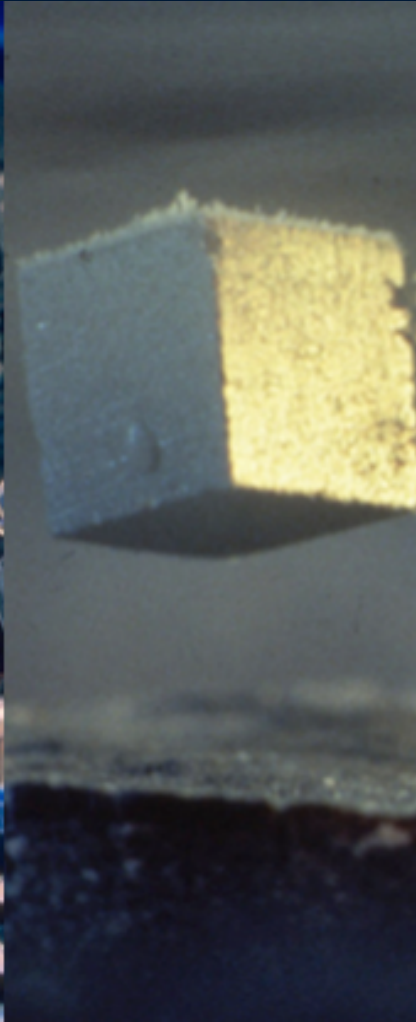
Major Historic Accomplishments



Token Ring



Scanning Tunneling Microscope



High Temperature Superconductivity



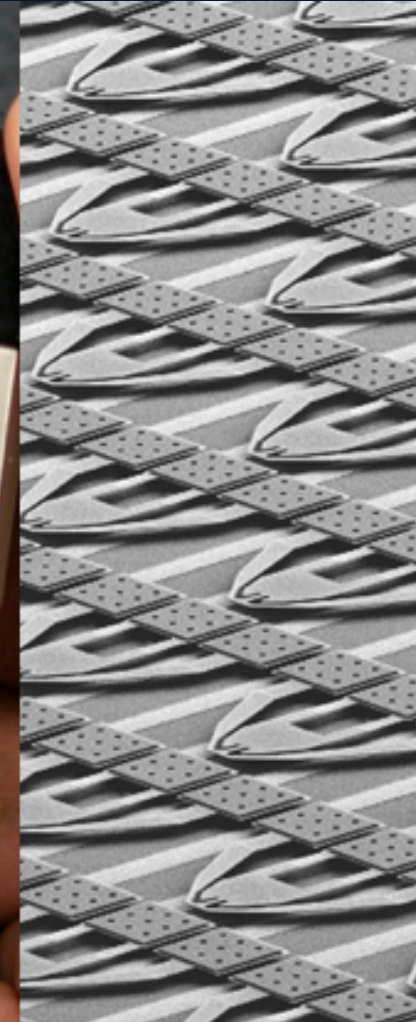
Noise-Predictive Maximum-Likelihood



JavaCard (JCOP)

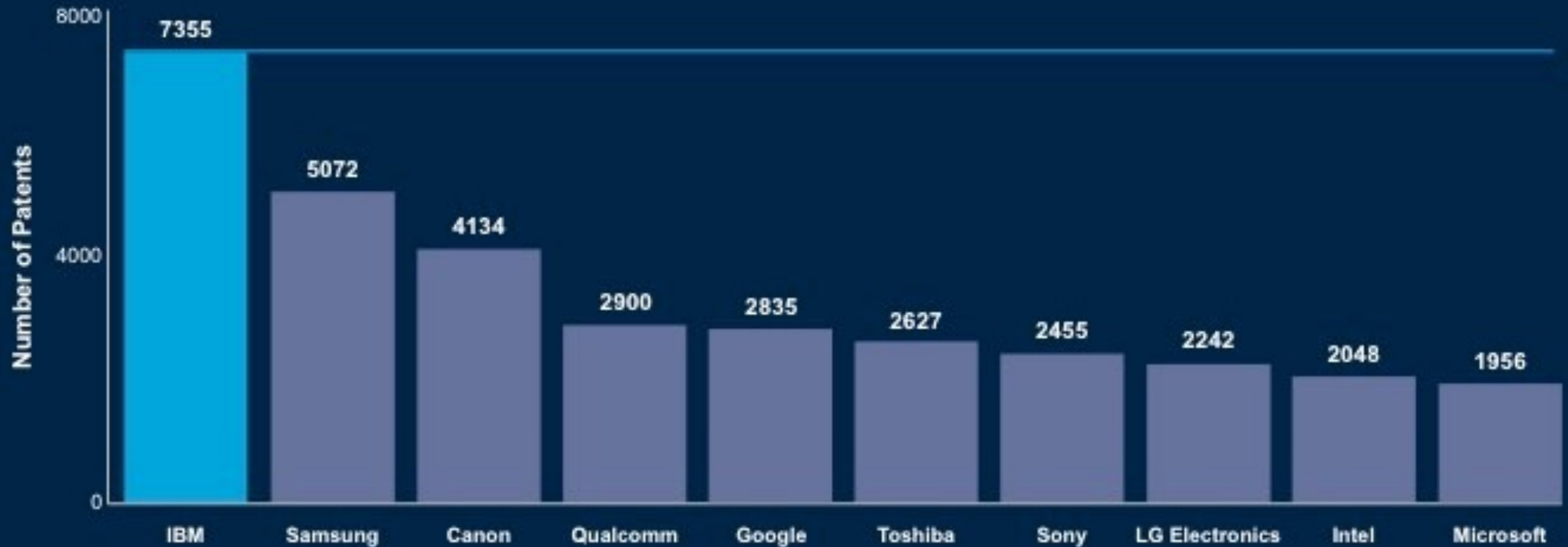


OLED



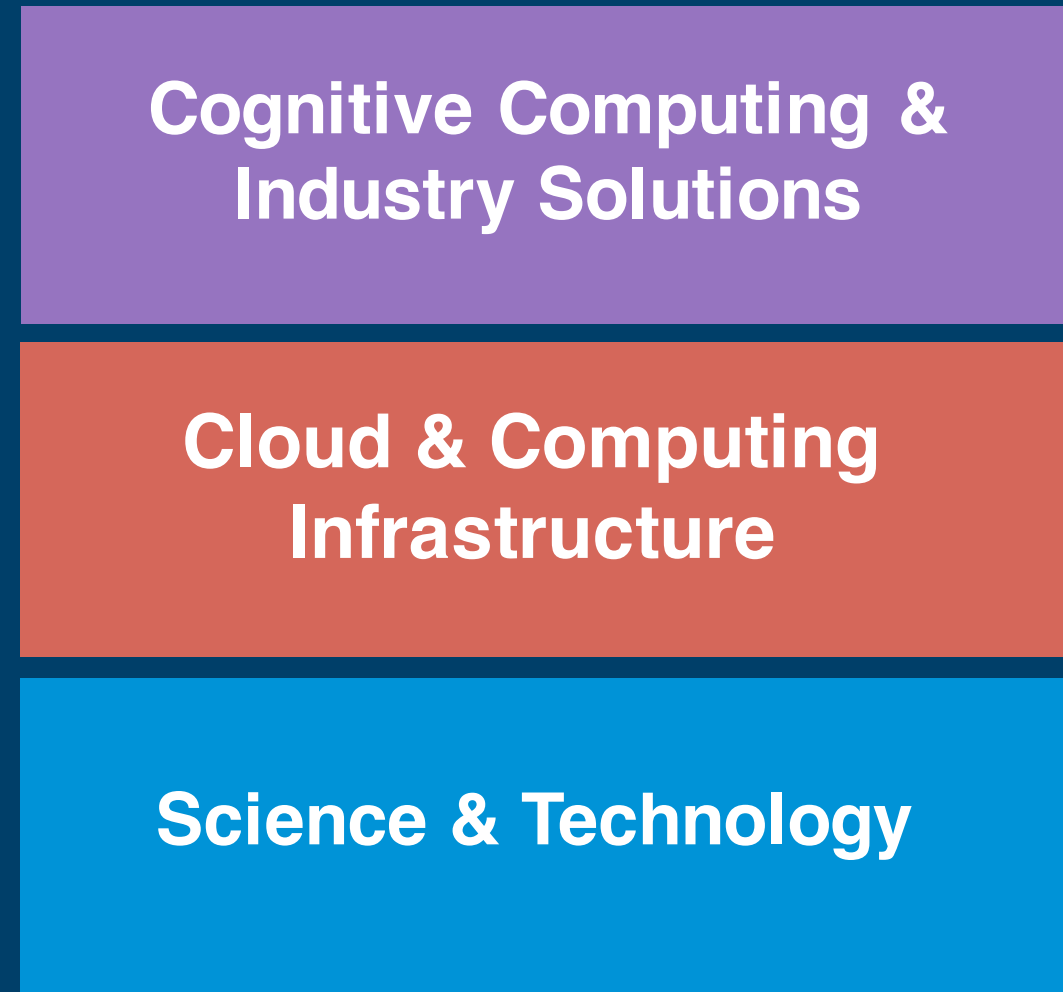
Millipede

2015 US Patent Leadership: 26 Years and Counting



Source: IFI CLAIMS Patent Services

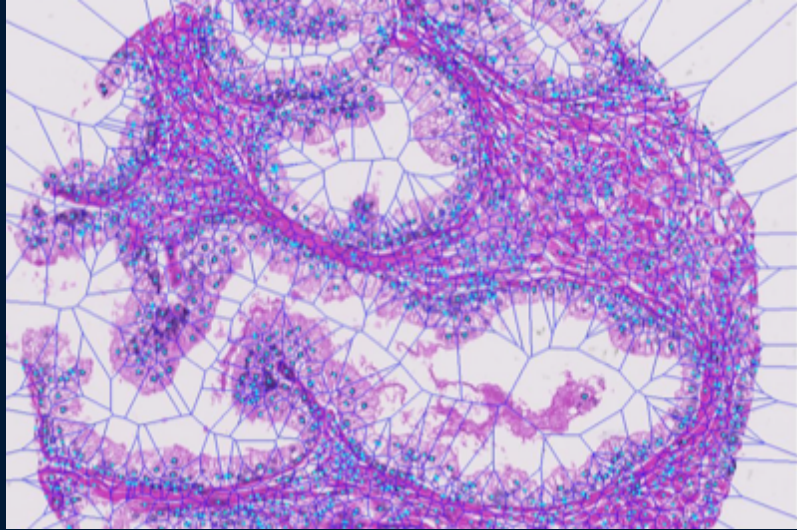
Scientific Departments



Big Data Analytics



New Areas of Focus in Zurich



Systems Biology



Quantum Computing and Neuromorphic Computing



Cloud Delivery

Blockchain for the Enterprise, Cold Storage, PowerCeph, I3: I/O for Instant Insights, Z2C,

RASIP, TSS



Internet of Things

Edge Computing, Wearables, Cognitive

WATSON COMPANY ANALYZER

360 degree view of B2B clients using analytics and industry specific Key Performance Indicator (KPI) in real time. Combines internal sales data with external data services like Hoovers, Reuters and Yahoo/Google Finance.



ATOMIC FORCE MICROSCOPY

IBM scientists first to distinguish individual molecular bonds. Recently, , they have observed a fascinating molecular rearrangement reaction known as a Bergman cyclisation.

SQUARE KILOMETER ARRAY (DOME)

Five-year collaboration with ASTRON to research extremely fast, but low-power exascale computer systems targeted for the international Square Kilometre Array (SKA), the world's largest and most sensitive radio telescope.

CLOUD OF CLOUDS TOOLKIT

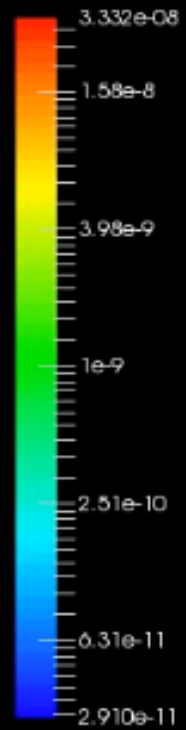
Can be configured to connect to one or more clouds (public, private, or hybrid), adds enterprise features, including; encryption, integrity, and resiliency, it's transparent to General Parallel File System (GPFS) and manages keys/metadata.



GORDON BELL 2015

Scientists at the University of Texas at Austin, IBM Research, New York University and the California Institute of Technology have been awarded the 2015 Gordon Bell Prize for realistically simulating the dynamics of Earth's interior. The team's work could herald a major step toward better understanding of earthquakes and volcanic activity.

velocity



Parked Cars as a Service



Parked cars with sensors and cameras can help with security

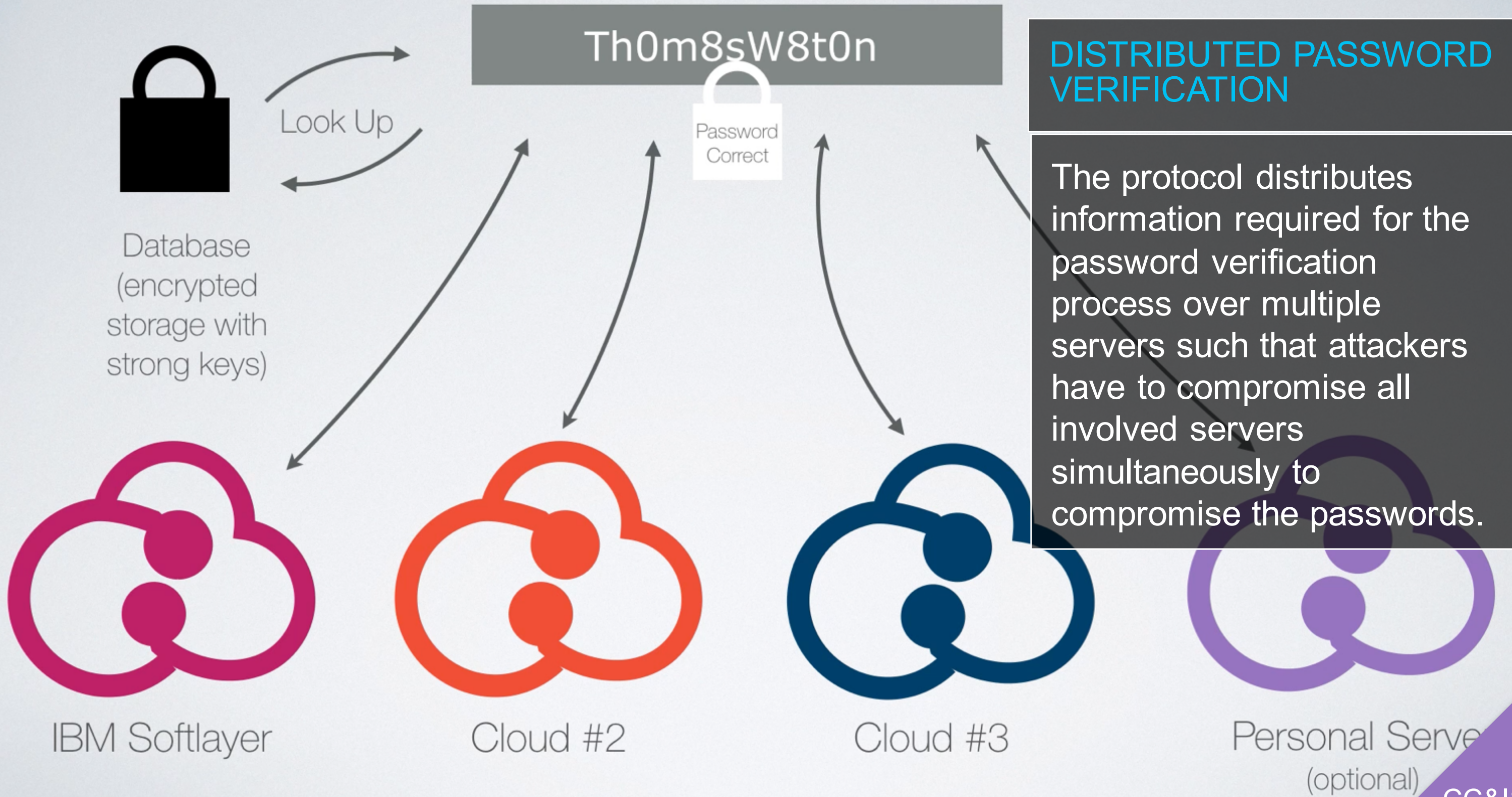


Parked cars in large cities can provide more eyes to find Alzheimer's patients



Parked cars with sensors can detect gas leaks before humans

Password Verification is Distributed Across Several Clouds



THRIVE PROJECT

Collaboration to develop a thermally powered adsorption heat pump to relieve the strain on the power grid on the one hand and harness heat from factories, power stations and cloud data centres centers.



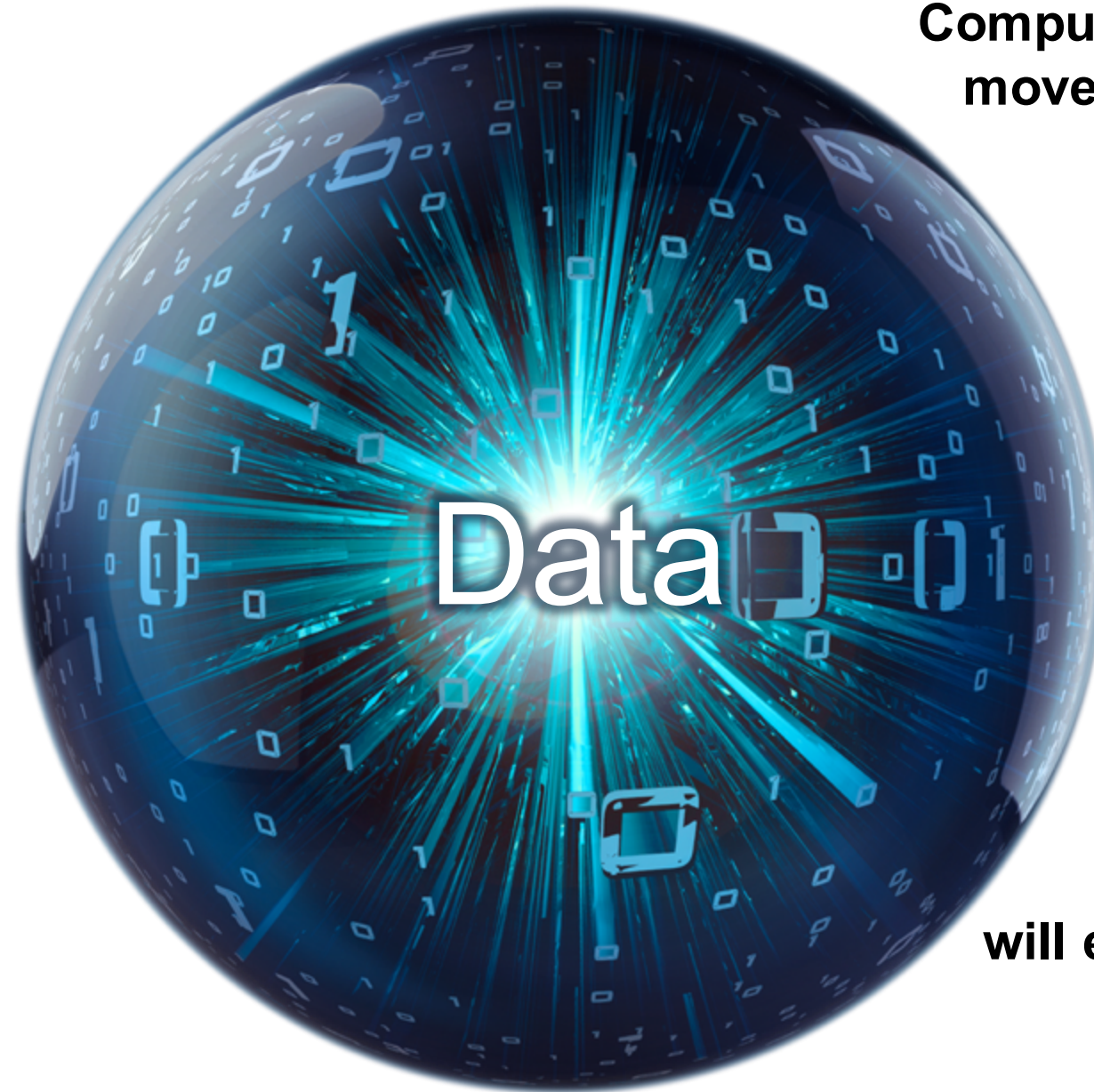
PHASE CHANGE MEMORY

For the first time, scientists at IBM Research have demonstrated reliably storing 3 bits of data per cell and retaining the information at elevated temperatures using a relatively new memory technology, known as phase-change memory (PCM).

Daten bilden die Basis der neuen Industrien
– angetrieben durch Technologien in der Cloud

**Compute must
move to data**

**Data curation leads
to optimal value**



**New IT platforms
will emerge at the edge**

Data is growing exponentially and demands new approaches (technology and strategy)

44 zettabytes

You are here

unstructured data

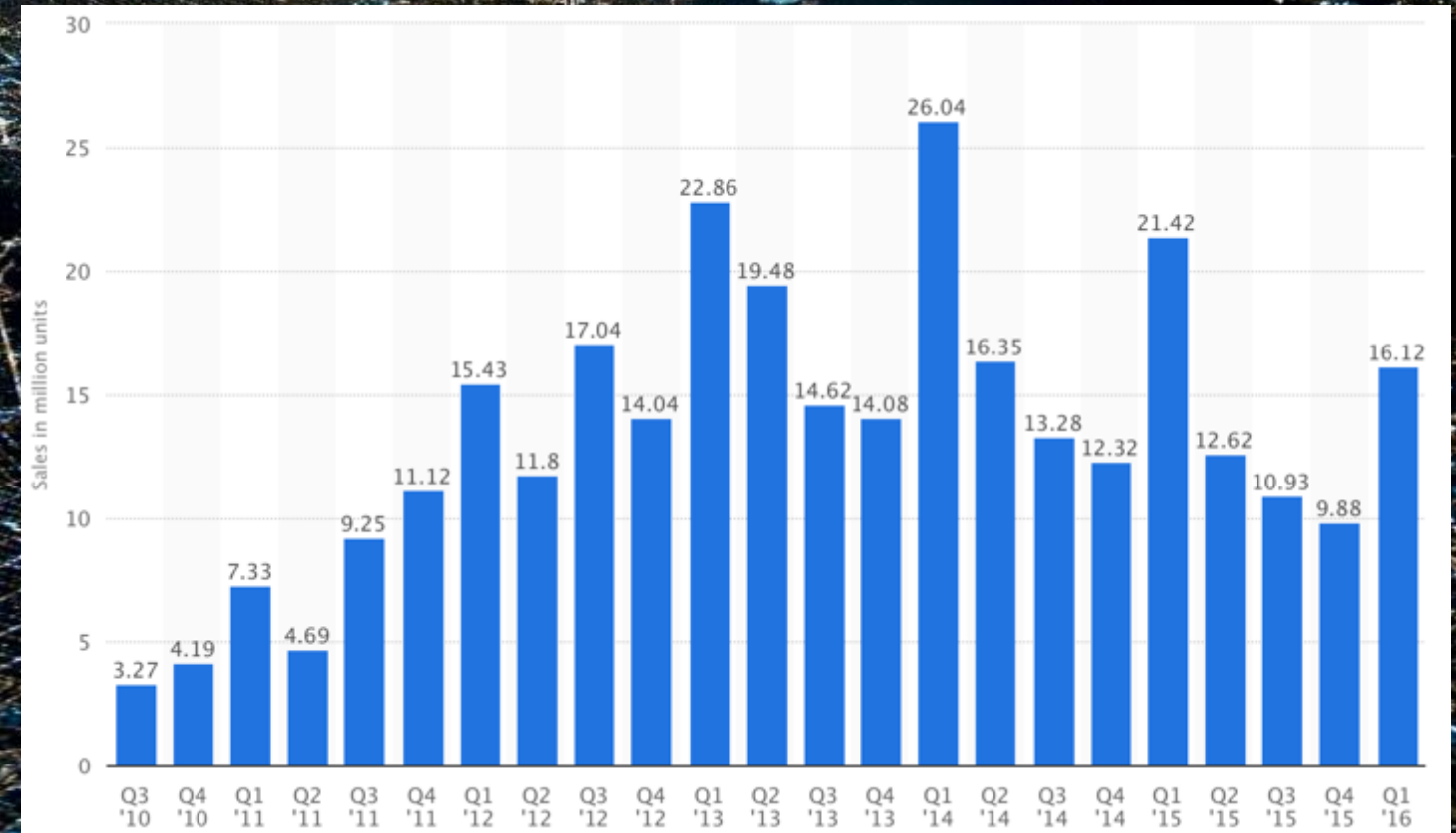
structured data

2020





44 Zetabyte = 44×10^{21}
 128 Gigabyte = 128×10^9
 ~350'000'000'000 iPads
 iPad : 0.24×0.0061 m





24 m

Great Wall : 21'196'000 m

Neue Teilnehmer drängen in den Markt mit den Kundendaten



Firma lockt mit Gratis-Steuererklärungen

von K. Wolfensberger - Eine Schweizer Firma füllt Kunden kostenlos die Steuererklärung aus. Schliesslich bezahlen diese aber doch: mit ihren Daten.

How many apps do you have installed?



How many apps do you have installed?
>100



How many apps do you have installed?
>100

How many apps do you use daily?



How many apps do you have installed?
>100

How many apps do you use daily?
<10%



How many apps do you have installed?
>100

How many apps do you use daily?
<10%

How often do you update them?



Swisscom 16:38 89%

[← Updates](#)

Details Rezensionen Zugehörig

Danke, dass du Facebook verwendest! Wir möchten unsere App für dich noch besser gestalten. Deshalb stellen wir jetzt alle 2 Wochen Aktualisierungen im App Store bereit. Du kannst die App automatisch aktualisieren, ohne hierher zurückkehren zu müssen. Gehe dafür zu „Einstellungen“ > „iTunes & App Store“ > „Automatische Downloads“ und aktiviere die Option „Updates“.

In jeder Aktualisierung deiner Facebook-App sind Verbesserungen enthalten, um die App schneller und zuverlässiger zu machen. Wenn neue Funktionen zur Verfügung stehen, werden wir diese für dich in der App sichtlich kennzeichnen.

Informationen

Entwickler	Facebook, Inc.
Kategorie	Soziale Netze
Aktualisiert	19.11.2015
Version	44.0
Größe	88.7 MB
Bewertung	Kennzeichnung: 4+

Highlights Topcharts Entdecken Suchen **Updates**

12:02 PM

Notes

Contacts

FaceTime

Mail 14

Swisscom 16:38 89%

[← Facebook](#)

44.0
19.11.2015

Danke, dass du Facebook verwendest! Wir möchten unsere App für dich noch besser gestalten. Deshalb stellen wir jetzt alle 2 Wochen Aktualisierungen im App Store bereit. Du kannst die App automatisch aktualisieren, ohne hie ... [Mehr](#)

43.0
05.11.2015

Danke, dass du Facebook verwendest! Wir möchten unsere App für dich noch besser gestalten. Deshalb stellen wir jetzt alle 2 Wochen Aktualisierungen im App Store bereit. Du kannst die App automatisch aktualisieren, ohne hie ... [Mehr](#)

42.0
22.10.2015

Danke, dass du Facebook verwendest! Wir möchten unsere App für dich noch besser gestalten. Deshalb stellen wir jetzt alle 2 Wochen Aktualisierungen im App Store bereit. Du kannst die App automatisch aktualisieren, ohne hie ... [Mehr](#)

Highlights Topcharts Entdecken Suchen **Updates**

How many apps do you have installed?
>100

How many apps do you use daily?
<10%

How often do you update them?
weekly automated

How many apps do you have installed?
>100

How many apps do you use daily?
<10%

How often do you update them?
weekly
automated

Why do you have them installed?

How many apps do you have installed?

How many apps do you use daily?

Radical change in IT

How often do you update them?

Why do you have them installed?

Swisscom 16:44 92 %

< Speicher Info

 FACEBOOK
Version 44.0
App-Größe: 83.1 MB

Dokumente & Daten 126 MB

Swisscom 16:45 93 %

< Speicher Info

 WHATSAPP
Version 2.12.11
App-Größe: 57.8 MB

Dokumente & Daten 671 MB

App Store (10)

Settings

Chrome

Safari

Mail (14)

Photos

Music


Photo Booth

Musik 2.9 GB >

Fotos & Kamera 13.1 GB >

Nachrichten 749 MB >

WhatsApp 729 MB >



Data at the Edge

90% of data
created over
the last 10
years was
ABANDONED

Smartphones already possess more storage capacity than all servers combined. Over 5000 Exabytes of data generated at the “edge” of the network by these and other devices stayed there or was thrown away in 2014.

To process the valuable data at the edge, a new computing platform is needed, one that can tap into the growing storage and compute of these devices. This platform will create a marketplace for connecting producers and consumers – of infrastructure and data – at the edge.

Data at the edge is changing how we look at data

90%

Of data created over the last 10 years was never captured or analyzed

2X

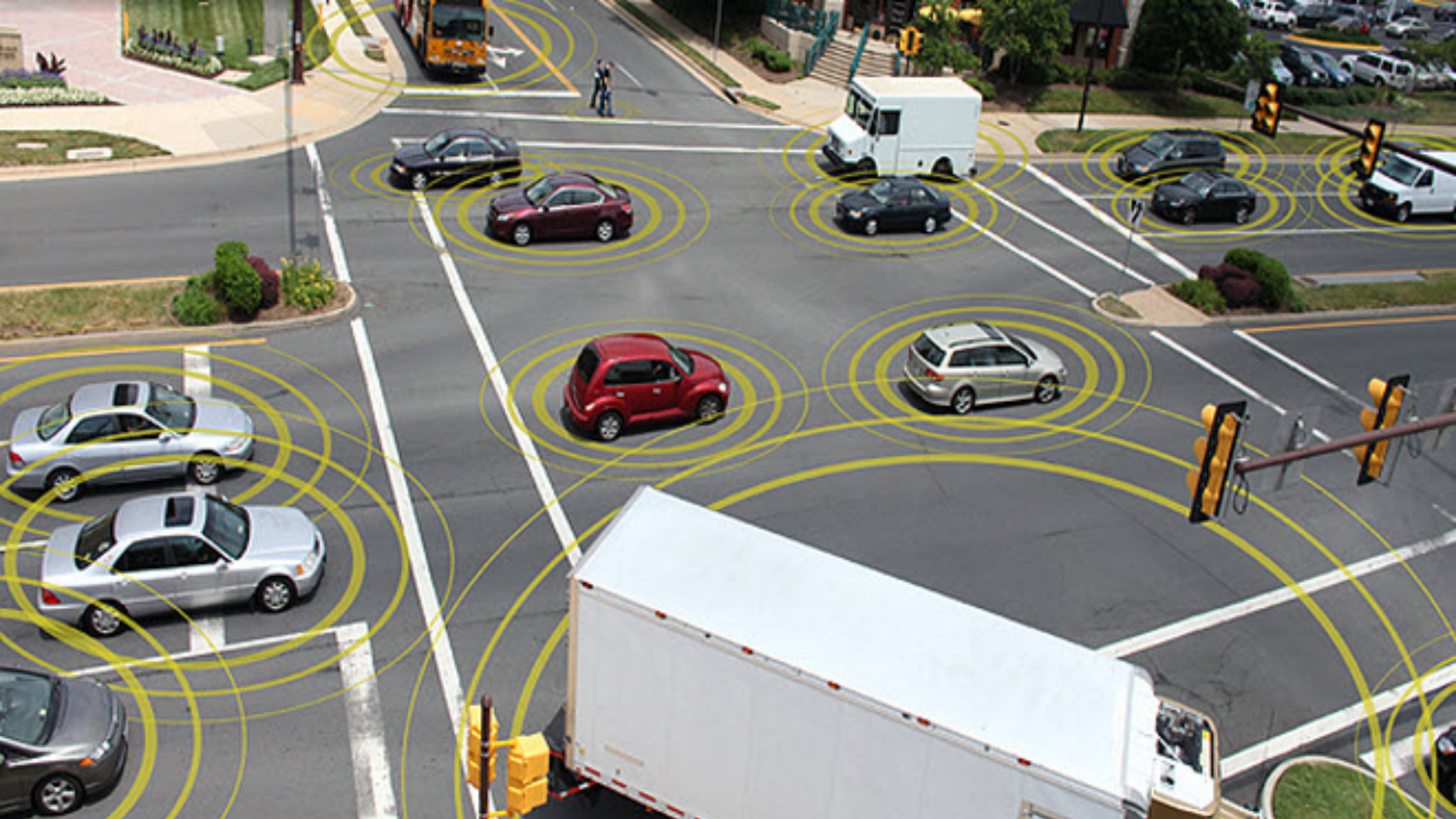
Rate of data creation compared to the expansion of bandwidth over the past decade

60%

Of valuable sensory data loses value in milliseconds

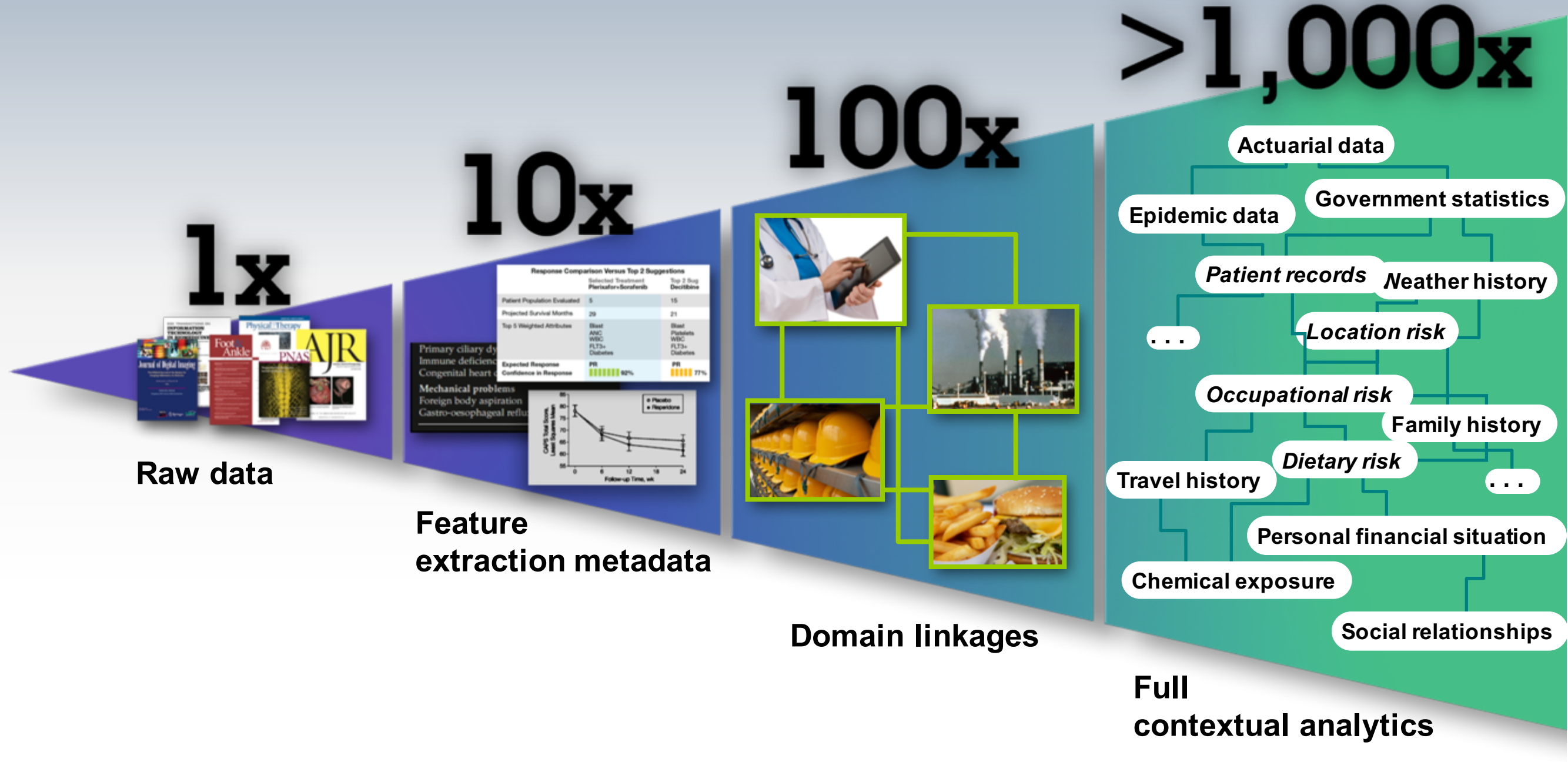
By 2017

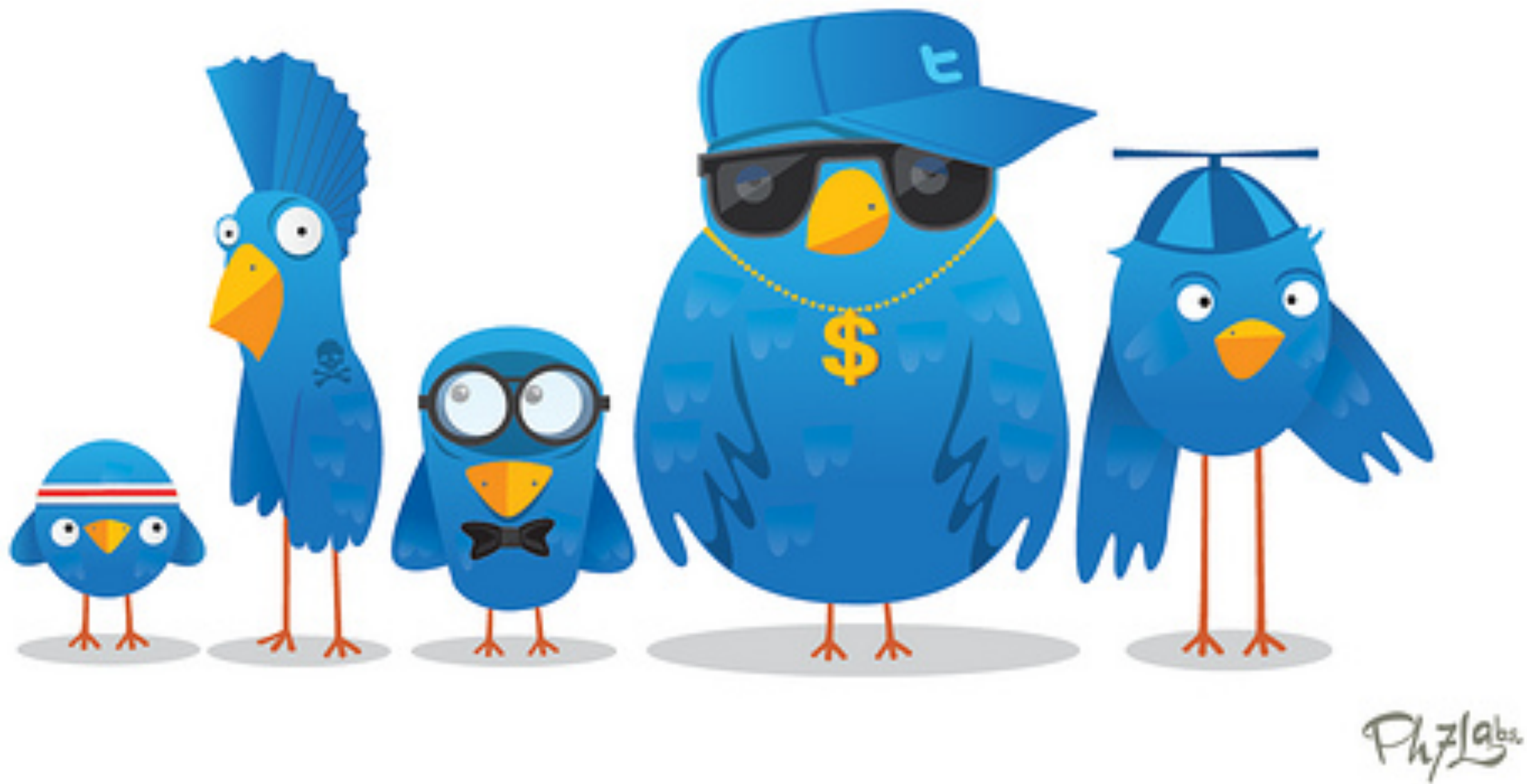
The collective computing and storage capacity of smartphones will surpass all worldwide servers

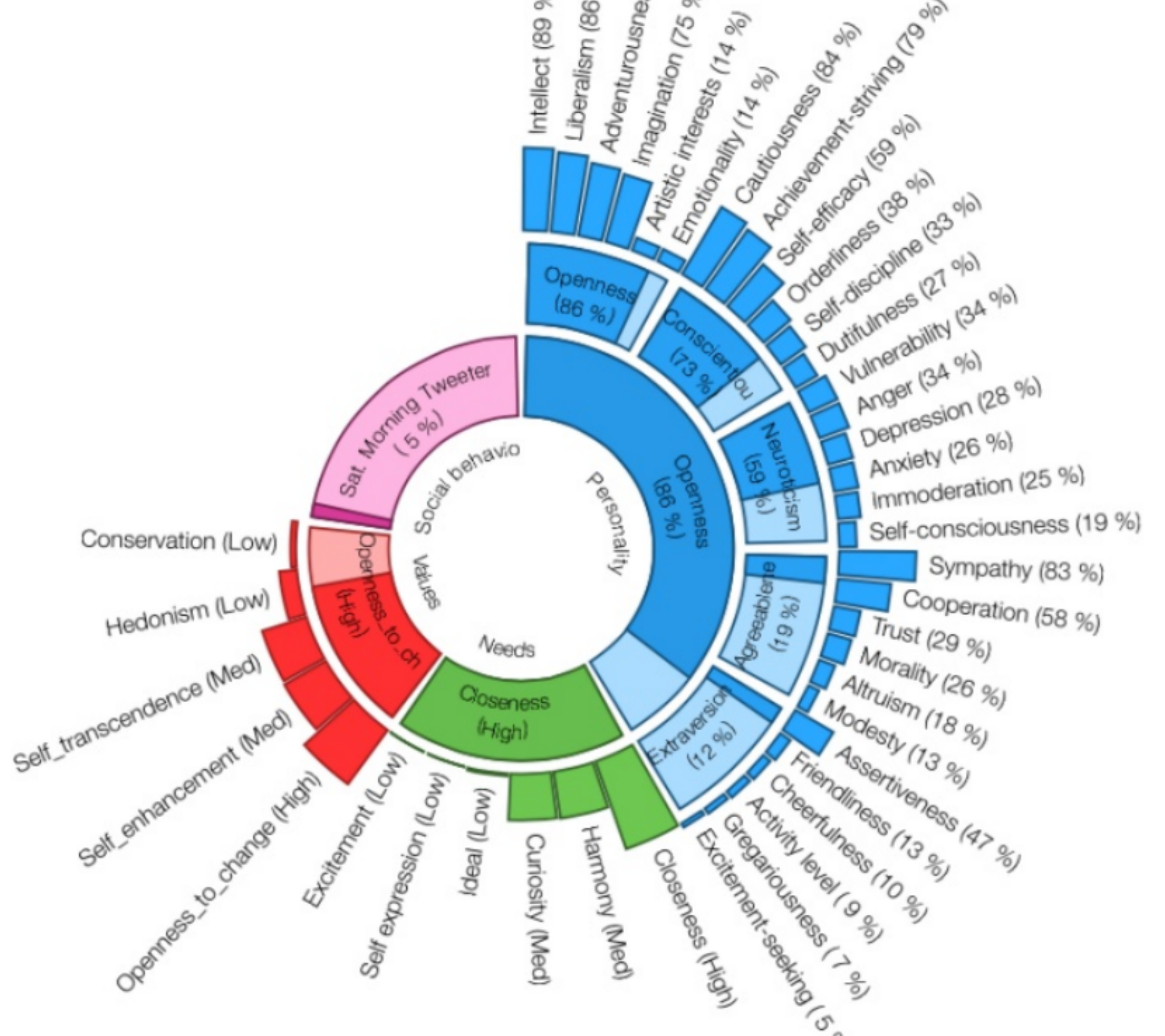




Context Multiplier Effect









Transforming Healthcare Consumption

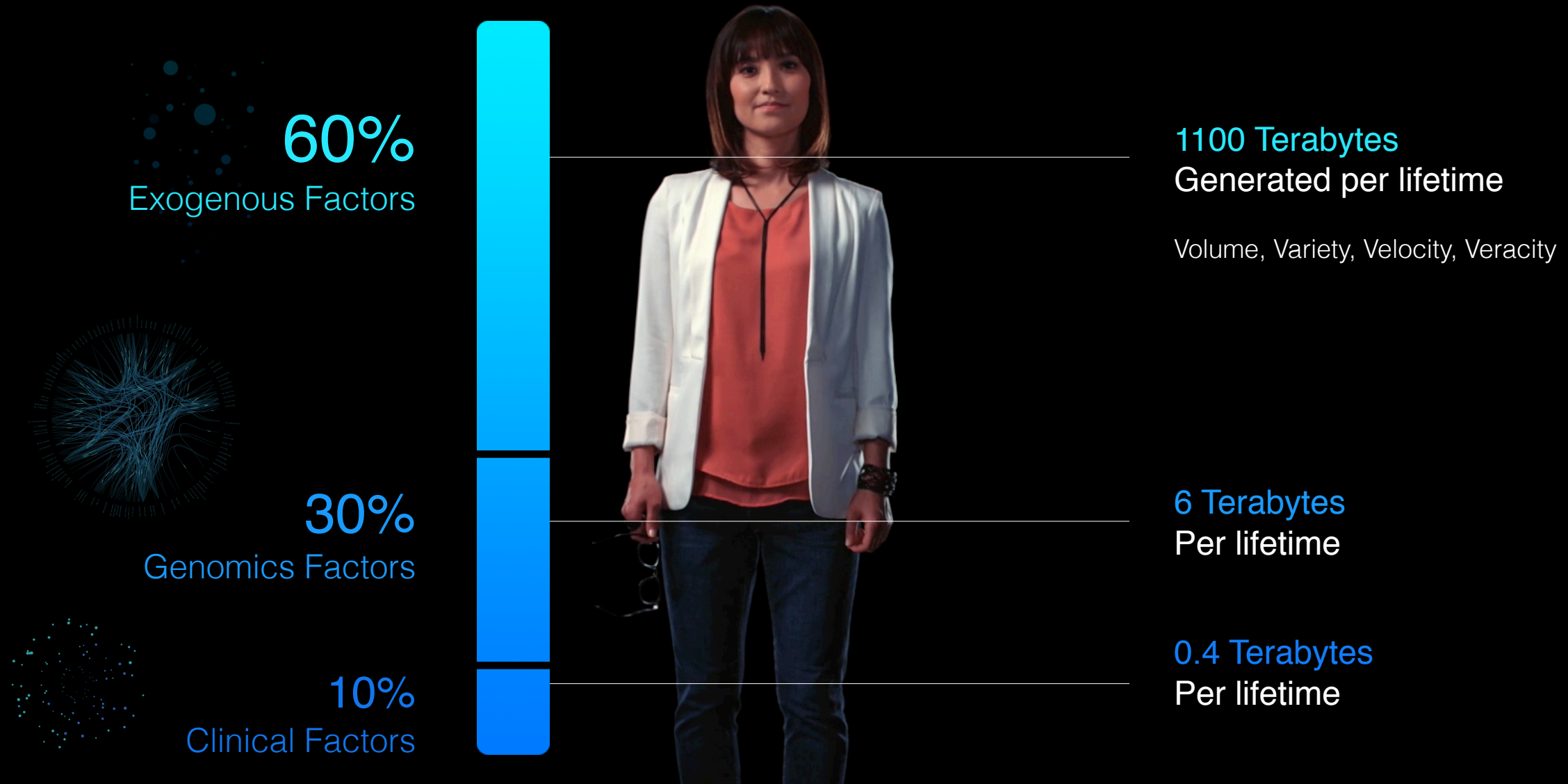
In a lifetime, an average human* will generate 0.4 TB of clinical data, 6 TB of genomic data, and 1100 TB of exogenous data

* in developed world

Exogenous data is the behavior, socio-economic and environmental data that is generated by the individual, fueled by the rapid adoption of smartphones and patient-controlled medical devices.

Accelerating the curation and integration of this mass of patient-generated data can lead to improvements in the accuracy of health assessments, monitoring, and self-treatment and strengthen health outcomes. These activities will also serve as the catalyst for new service models that will shape and influence the healthcare market

A vast amount of untapped data could have a great impact on our health - yet it exists outside medical systems.

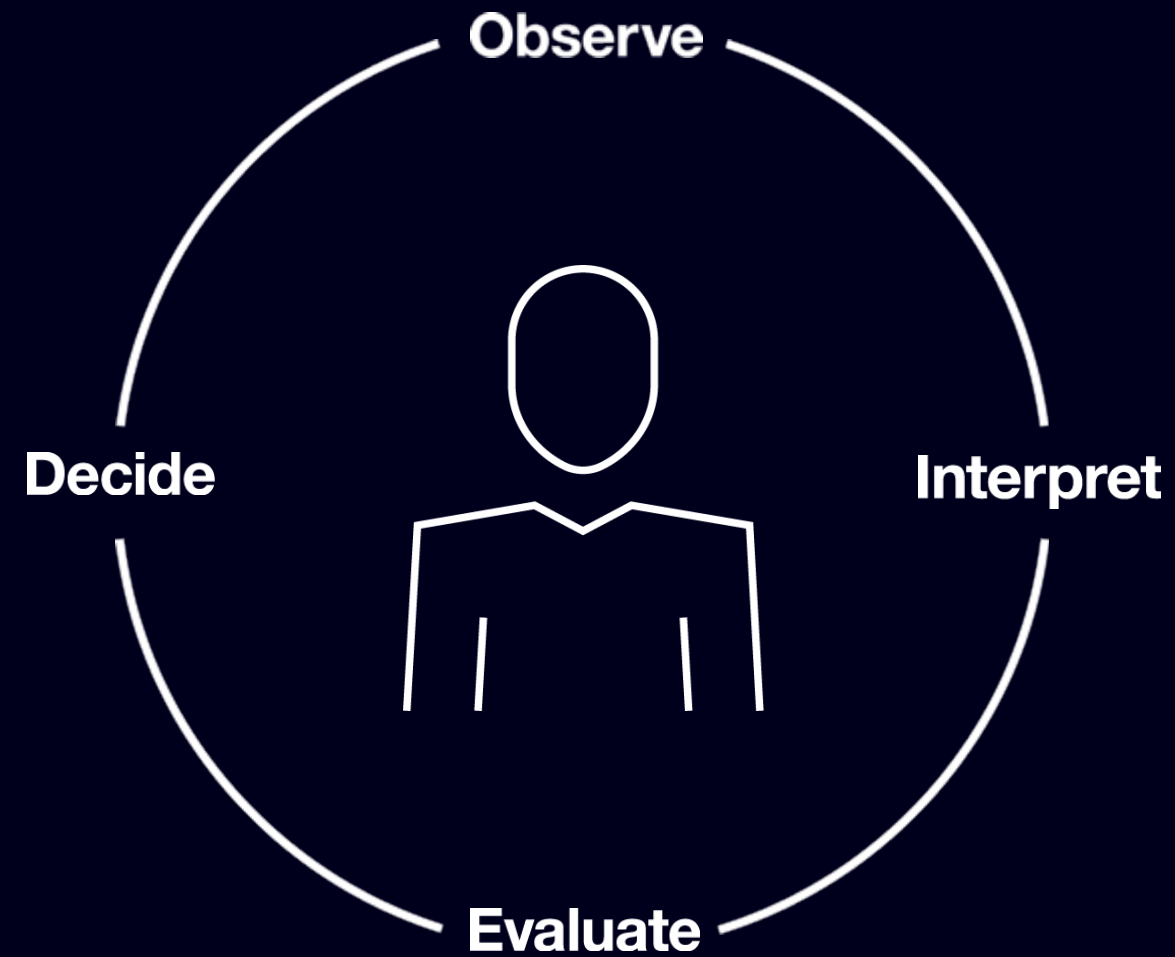


IBM Watson

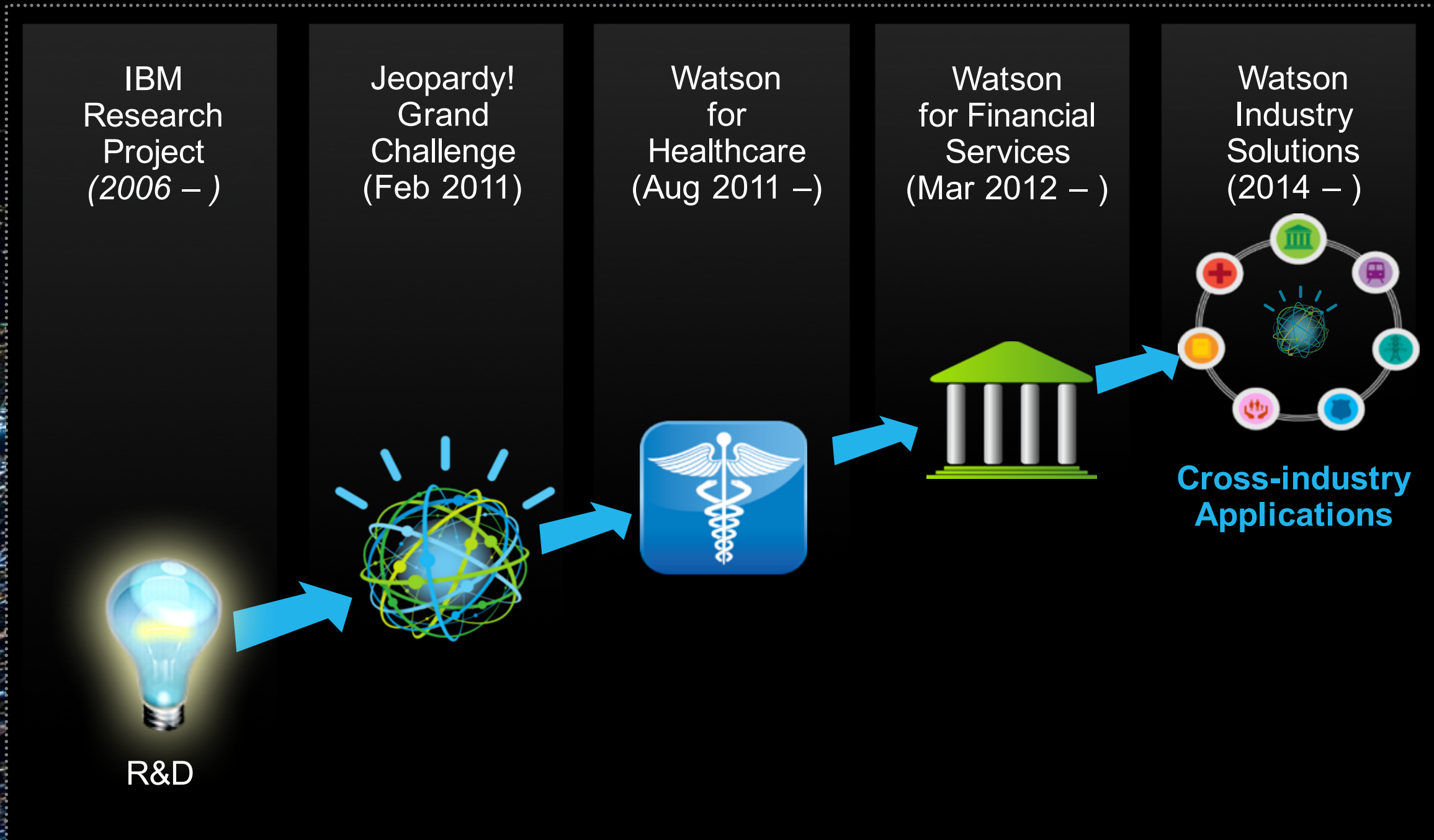
Expertise matters more
today than ever before.

IBM

This is how cognition works.



Putting Watson to work to address the world's pressing issues



The Watson that competed on *Jeopardy!* in **2011** comprised what is now a single API—**Q&A**—built on **five underlying technologies**.

Since then, Watson has grown to a family of **28 APIs**.

By the end of 2016, there will be nearly **50 Watson APIs**—with more added every year.

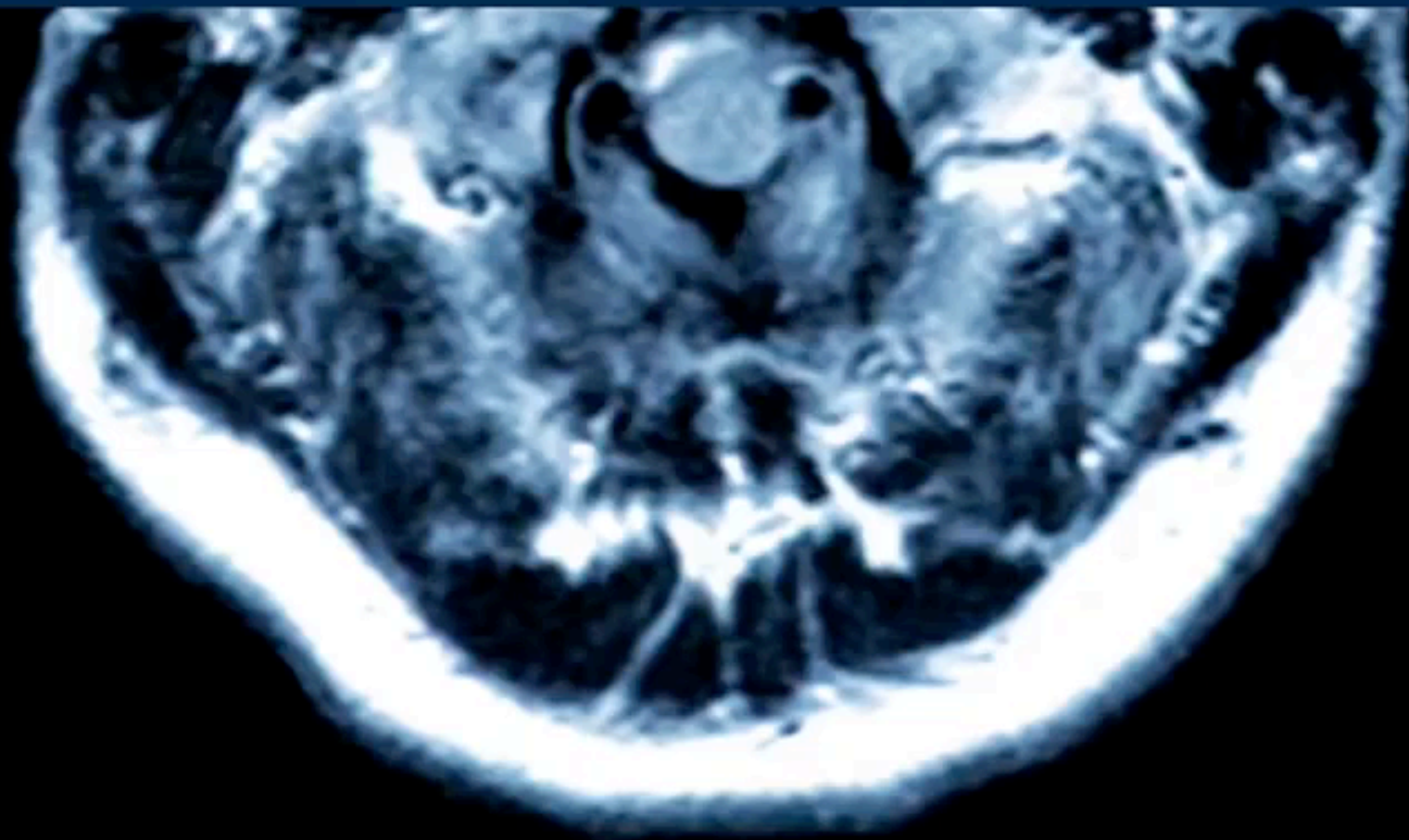


**Preparation for Doctor's
First Consultation with Patient**

IBM WATSON



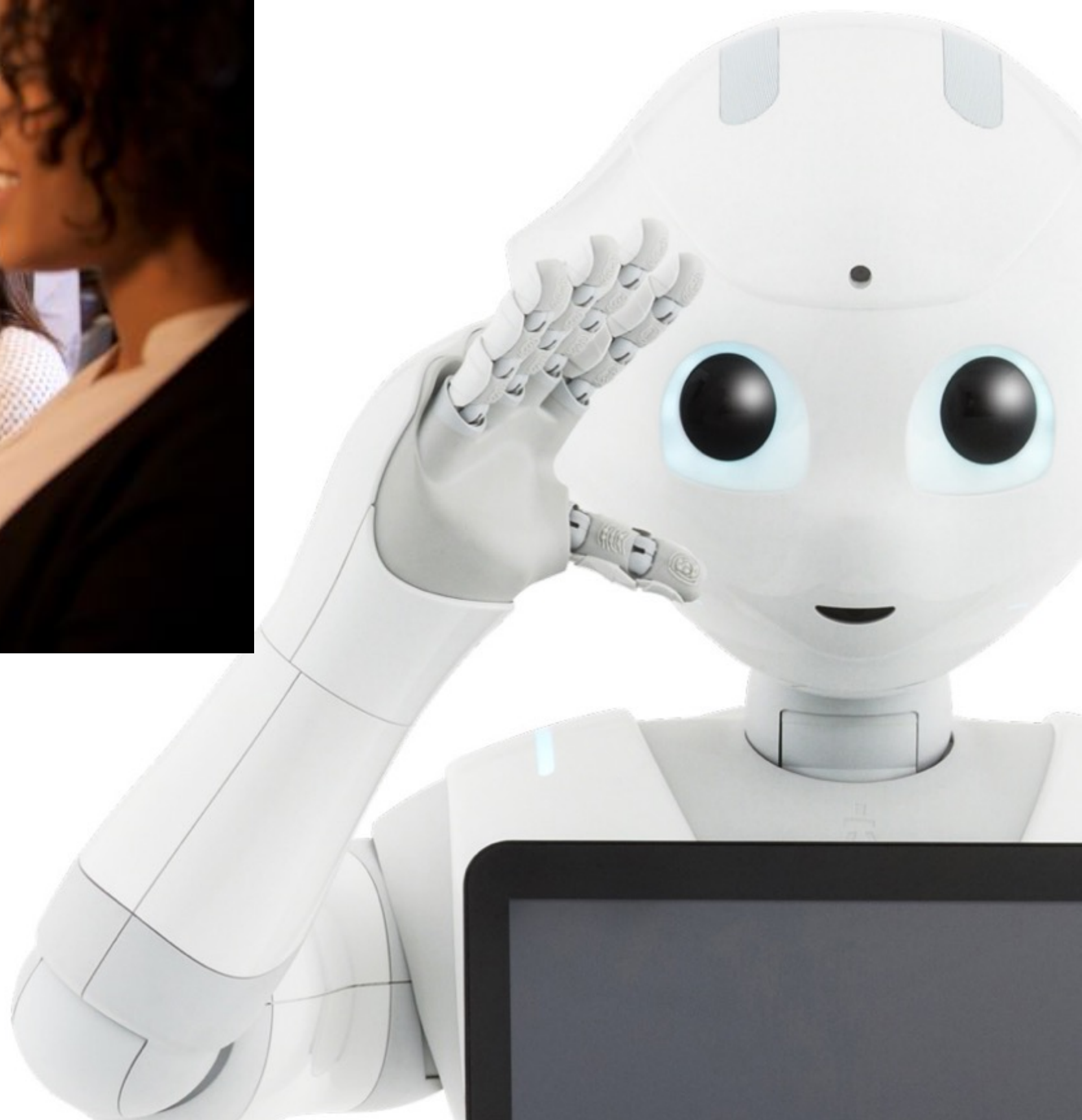
Memorial Sloan-Kettering
Cancer Center



<https://www.youtube.com/watch?v=d-umbokNLGQ>

**Ashley Bryant +
IBM Watson**







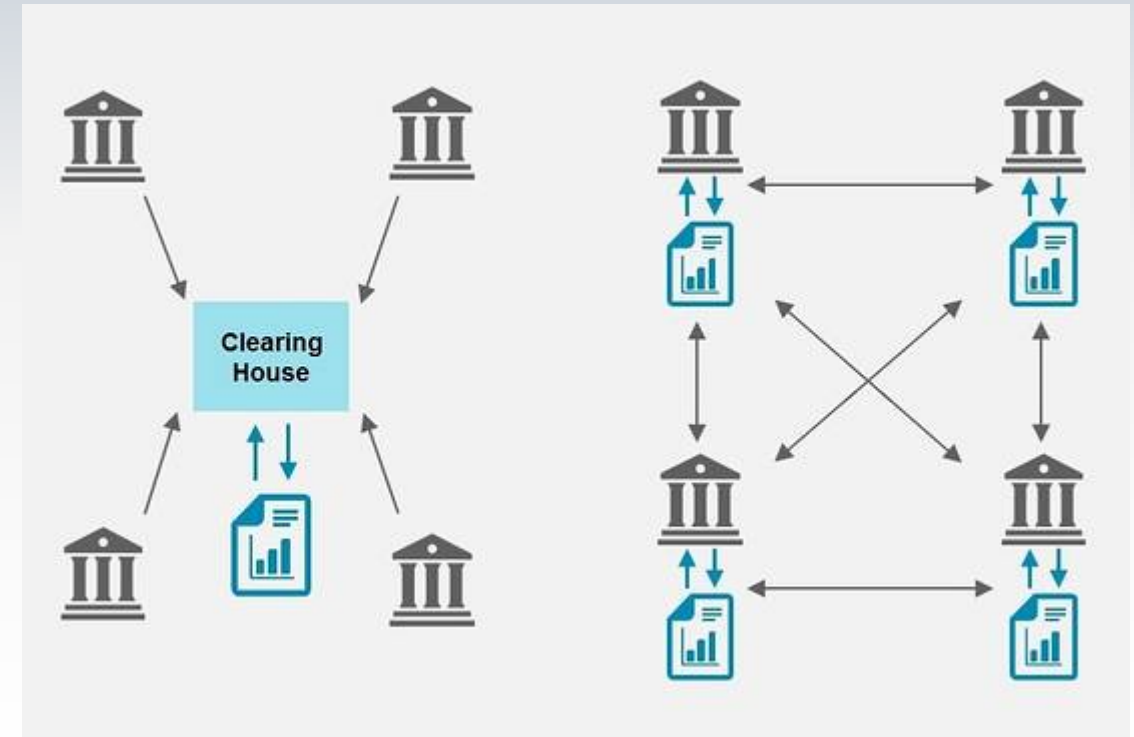
BLOCKCHAIN



BLOCKCHAIN



Economic transactions on a distributed ledger can be programmed to record **virtually anything of value**: your identity, a will, a deed, a title, a license, intellectual property, and also almost any type of financial instrument.



“How seriously should we take this? I would take it as seriously as we should have taken the concept of the Internet in the 1990s.”

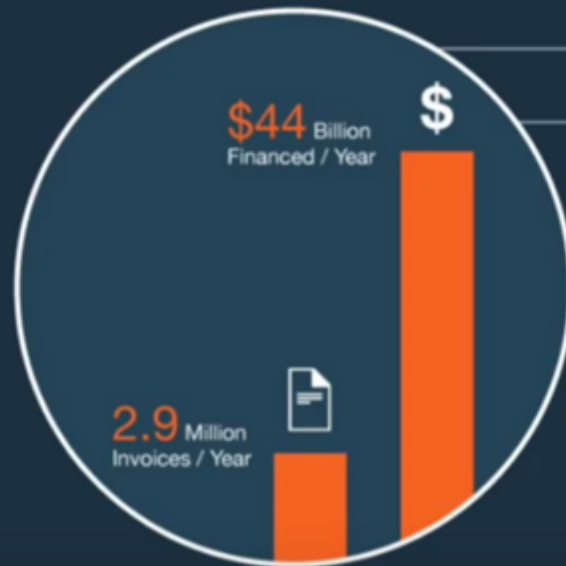
—Blythe Masters, DAH <http://bit.ly/1JENgb4>

IBM Blockchain Solution for Global Financing



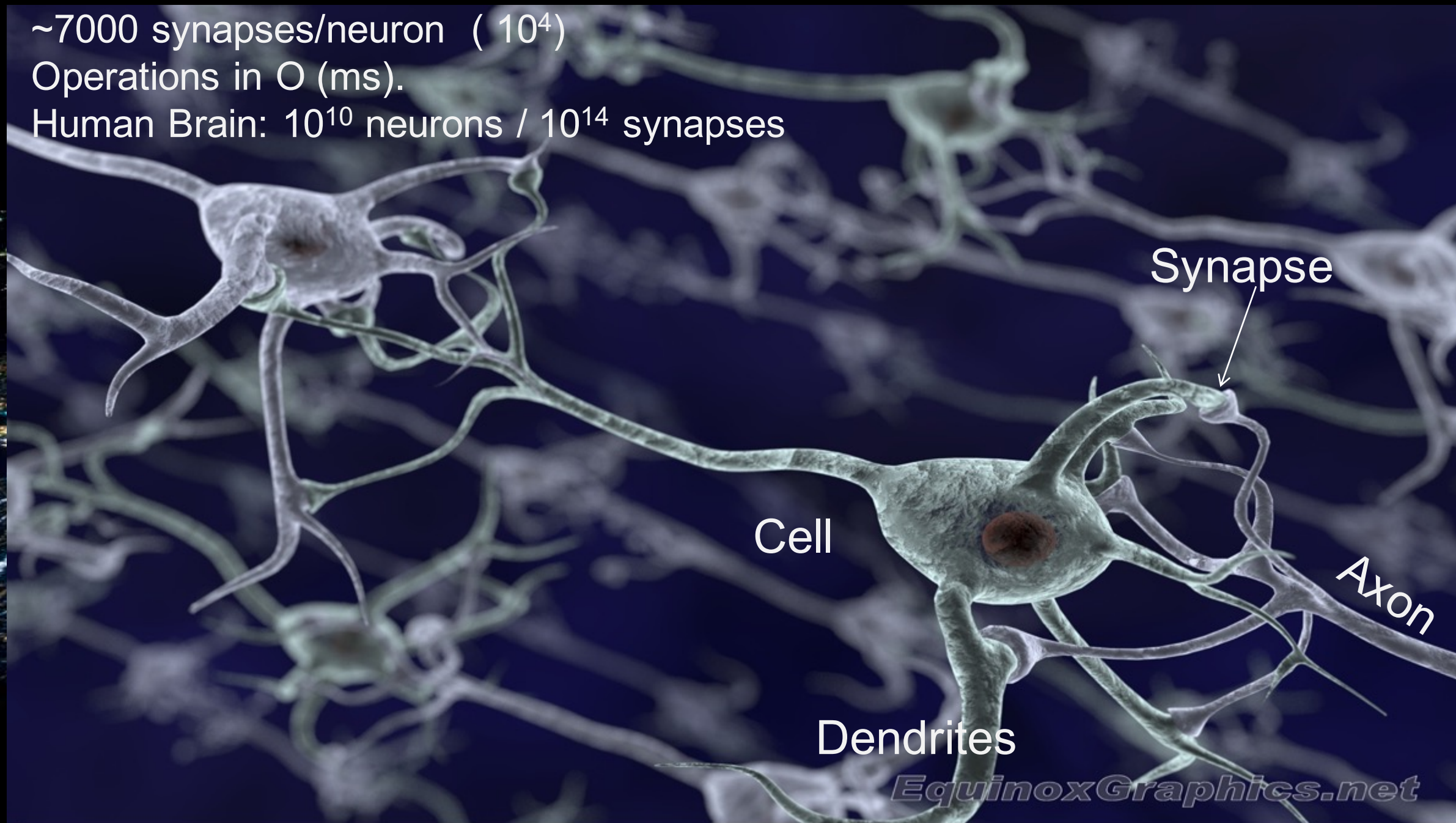
Over 4,000 Suppliers and Partners Worldwide

25,000+ Disputes Every Year



The Synapse Project: Short Introduction

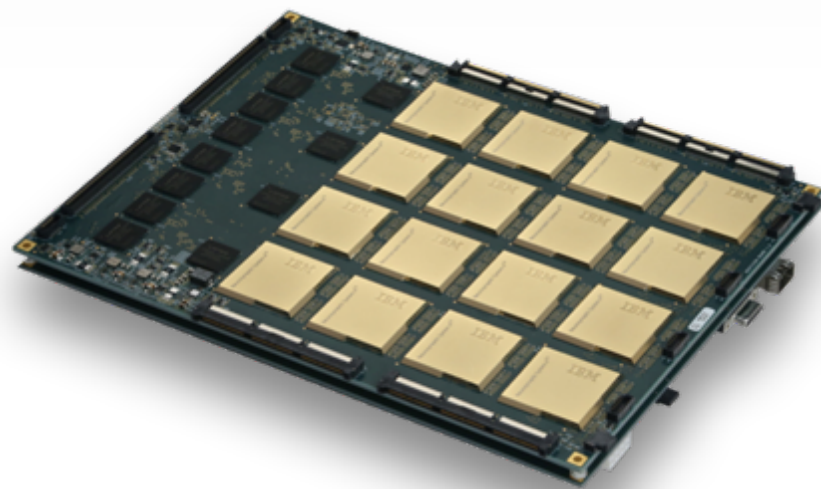
~7000 synapses/neuron (10^4)
Operations in O (ms).
Human Brain: 10^{10} neurons / 10^{14} synapses



IBM SyNAPSE chip



	2011	→	2014
 Programmable neurons	256		1 million
 Programmable synapses	262,144		256 million
 Neurosynaptic cores	1		4,096



Board:

16 million neurons

4 billion synapses
(deutsch 4 Milliarden)



100 billion neurons
(deutsch 100 Milliarden)

100 trillion synapses
(deutsch 100 Billionen)